

# STANDARD DRAWING

INSULATION TO BE  
INSTALLED PRIOR TO  
APEX EXTERIOR CAP

15mm x 4mm FOAM TAPE

5mm NOMINAL PACKING

EXTERIOR COVER CAP TO BE BONDED TO GLASS  
SURFACE USING LOW MODULUS CLEAR SILICONE

POLYETHYLENE BACKING ROD  
AND PACKERS

Silicone seal around gap edge

12mm Nominal Packing

USE PLASTIC HORSESHOE  
SHIMS AS REQUIRED,  
SUPPLIED BY  
THERMALIGHT.

Ø12 HOLE PLUG

No.12 x 2' POUZ PAN  
HEAD WOOD SCREW

20mm MAXIMUM ASPHALT

75 mm min

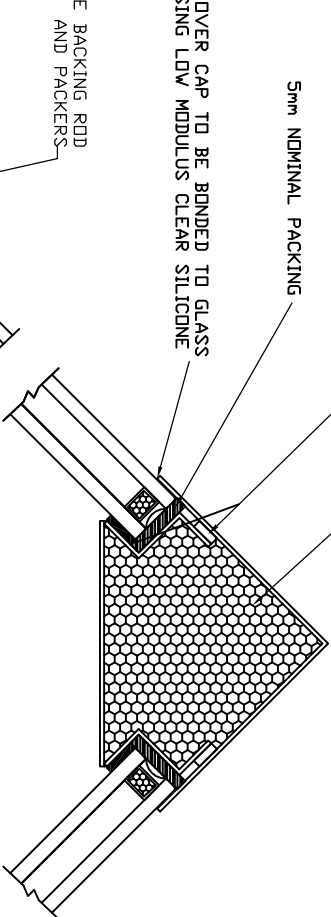
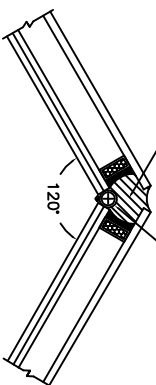
3mm x 10mm SAT FOAM TAPE

THERMALLY BROKEN EXTRUDED FRAMEWORK

Ø8 BUTYL TAPE APPLIED BETWEEN  
FRAMEWORK AND UPSTAND

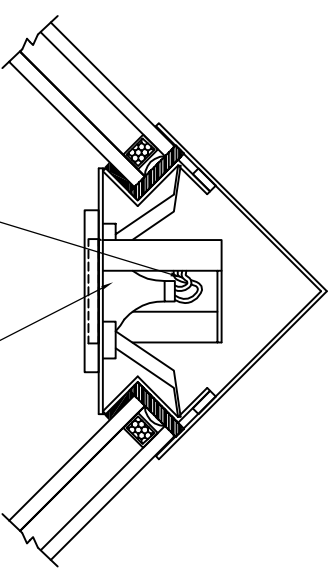
Overall Kerb Dim

SILICONE BEAD APPLIED  
EPDM GASKET TO FINISH  
INTERNAL EDGE



## Downlighter Option for the Glass Pyramid

(supplied as standard. Please advise with order if not required)



Wires run under corner silicone joint  
and emerge at internal corner  
for link to supplied transformer

low voltage  
halogen  
spot light

CROSS SECTION OF  
TYPICAL EAVES



Pyramid House, 52, Guilford Road,  
Lighwater, Surrey, GU18 5SD  
Tel: +44 (0)1276 450609  
Fax: +44 (0)1276 451533  
Email: info@nationaldomes.com  
Website: www.nationaldomeightcompany.co.uk

Third angle projection unless otherwise noted.

Tolerances:

Whole numbers = ±1mm

One decimal place = ±0.5mm

Two decimal places = ±0.2mm

Angular = ±1 degree

IF IN DOUBT - - - - - ASK!

Checked by:

Date:

Quantity: N/A

Description:

Square Glass Pyramid

Product:

Glass Pyramid

Finish: Polyester Powder Coated

Materials: N/A

Drawn by: JQ

Date: 05/01/06

Product Ref:

404

Stock/Part No:

404/ASS/001 D

Drawing No:

404/ASS/001 D

### NOTES.

#### GLASS SPECIFICATION:

6mm Clear Toughened Outer  
16mm Black Spacer  
6mm Clear Toughened Inner

CONFORMING TO IMPACT RESISTANCE AND  
BREAKAGE CHARACTERISTICS OF BS6206.  
DOU'S FABRICATED TO BS5713 AND  
SUPPLIED IN ACCORDANCE WITH BS6262  
TO ALLOW 15mm NOM. ENGAGEMENT.

#### FINISH SPECIFICATION:

POLYESTER POWDER COATED  
(PRIMARY SURFACES),  
Ral 9010 matt WHITE / Ral 7015 matt GREY

MINIMUM COATING THICKNESS 40 MICRONS.

#### FIXING SPECIFICATION:

ALL FIXINGS TO BE A2 STAINLESS STEEL.

#### ALUMINIUM SPECIFICATION:

EXTRUSIONS TO COMPLY WITH BS1474,  
SHEET ALUMINIUM TO COMPLY  
WITH BS EN 485, BS EN 515, BS EN 573.

#### UPSTAND SPECIFICATION:

KERB OPENING TO BE CONSTRUCTED TO  
WITHIN ±5mm OF DESIGNED SIZES &  
±10mm ON DIAGONALS.  
UPSTAND WEATHERING BY OTHERS