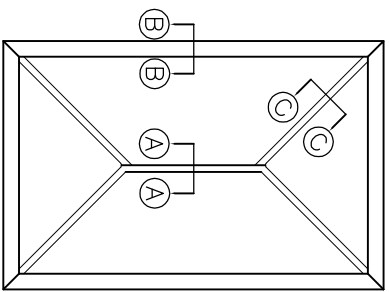
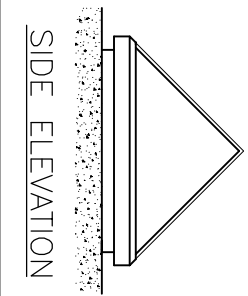


STANDARD DRAWING

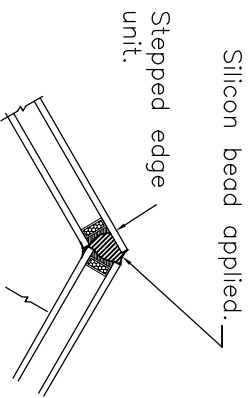
PLAN ELEVATION



SIDE ELEVATION



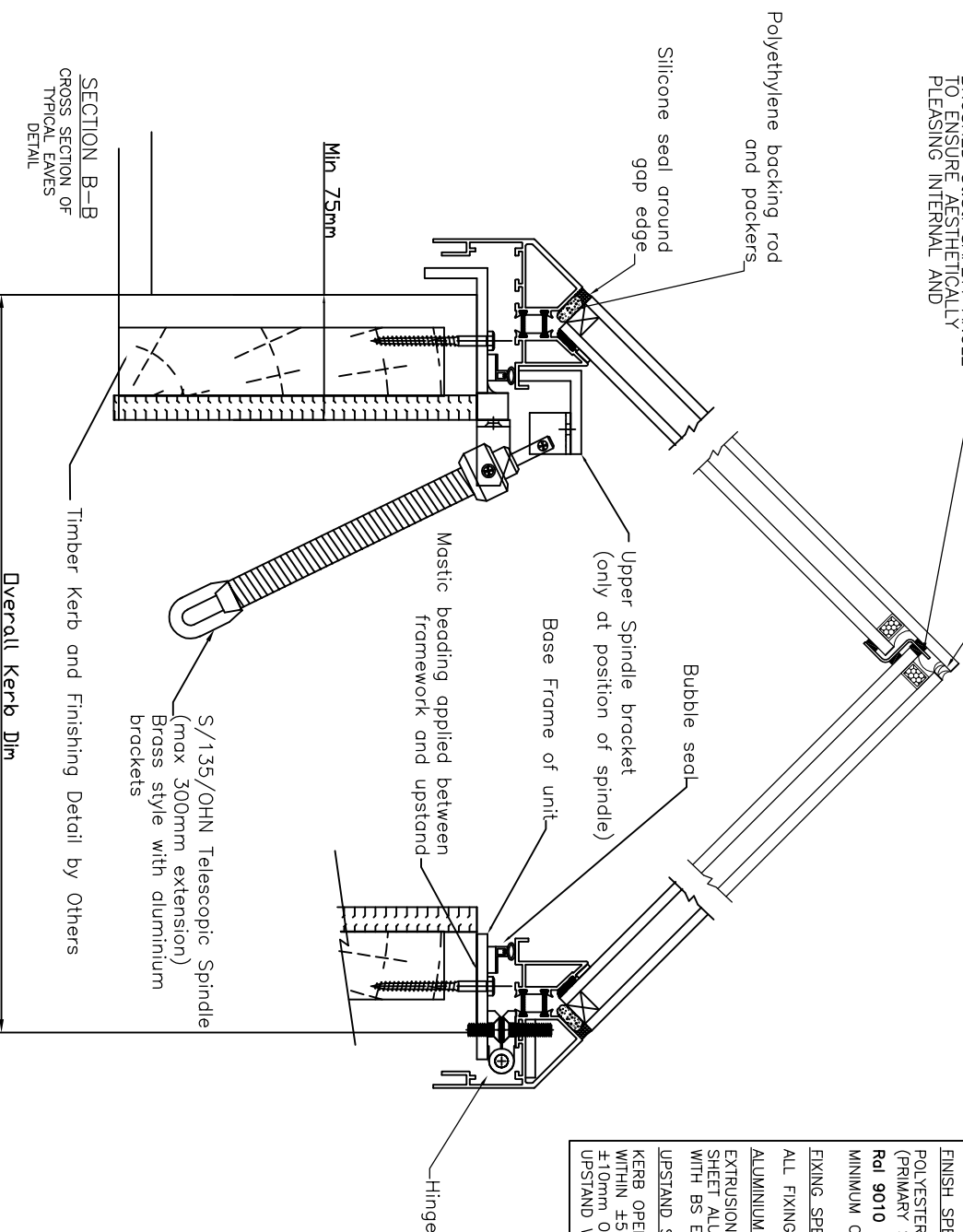
SECTION C-C
CROSS SECTION OF
TYPICAL HIP DETAIL.



SILICONE POINTING
ALONG GLASS TO
GLASS INTERFACES.

DOUBLE GLAZED UNITS TO
LAP JOIN AS SHOWN WITH
BRUSHED STAINLESS SAFETY ANGLE
TO ENSURE AESTHETICALLY
PLEASING INTERNAL AND

SECTION A-A
CROSS SECTION OF
TYPICAL APEX DETAIL



NOTES.

- GLASS SPECIFICATION:**
 6mm Clear Toughened Outer
 16mm Black Spacer
 6mm Clear Toughened Inner
 CONFORMING TO IMPACT RESISTANCE AND
 BREAKAGE CHARACTERISTICS OF BS6206.
 DGU'S FABRICATED TO BS5713 AND
 SUPPLIED IN ACCORDANCE WITH BS6262
 TO ALLOW 15mm NOM. ENGAGEMENT.
- FINISH SPECIFICATION:**
 POLYESTER POWDER COATED
 (PRIMARY SURFACES).
Ral 9010 matt WHITE / Ral 7015 matt GREY
 MINIMUM COATING THICKNESS 40 MICRONS.
- FIXING SPECIFICATION:**
 ALL FIXINGS TO BE A2 STAINLESS STEEL.
- ALUMINIUM SPECIFICATION:**
 EXTRUSIONS TO COMPLY WITH BS1474,
 SHEET ALUMINIUM TO COMPLY
 WITH BS EN 485, BS EN 515, BS EN 573.
- UPSTAND SPECIFICATION:**
 KERB OPENING TO BE CONSTRUCTED TO
 WITHIN ±5mm OF DESIGNED SIZES &
 ±10mm ON DIAGONALS.
 UPSTAND WEATHERING BY OTHERS

Third angle projection unless otherwise noted.

Tolerances:

Whole numbers = ±1mm

One decimal place = ±0.5mm

Two decimal places = ±0.2mm

Angular = ±1 degree

IF IN DOUBT ----- ASKI

Checked by:

Date:

Quantity: N/A

Description:

Manual Hinged Elongated Glass Pyramid

Product:

Glass Pyramid

Finish:

Polyester Powder Coated

Materials:

N/A
For Units under 115 Kg

Drawn by:

John

Date:

19/03/04

Drawing No:

404/ASS/014 revA



Pyramid House, 52, Guilford Road,
Lightwater, Surrey, GU18 5SD

Tel: +44 (0)1276 450609

Fax: +44 (0)1276 451533

Email: info@nationaldomes.com

Website: www.nationaldomelightcompany.co.uk

DO NOT SCALE.